

SMS Band Scales

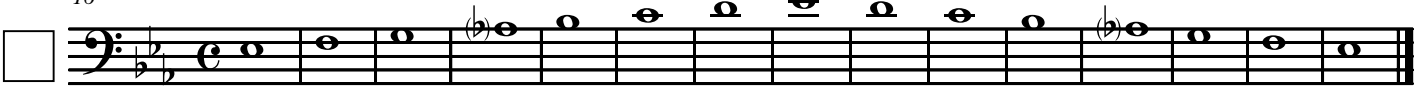
Trombone
Baritone

Concert Bb Scale



Concert Eb Scale

16



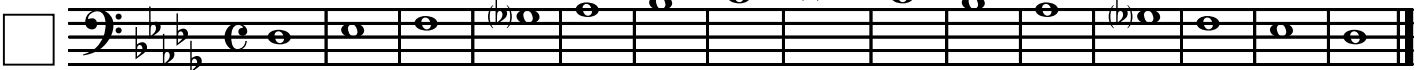
Concert Ab Scale

31



Concert Db Scale

46



Concert Gb Scale

61



Concert B/Cb Scale

76



91 Concert E/Fb Scale

Musical notation for the Concert E/Fb Scale, starting at measure 91. The scale is written in bass clef with a key signature of two sharps (F# and C#) and a common time signature (C). The notation includes a series of eighth notes with stems pointing up, and a series of eighth notes with stems pointing down, indicating a descending scale. The notes are: E2, F#2, G2, A2, B2, C#2, D2, E2, D2, C#2, B2, A2, G2, F#2, E2.

106 Concert A Scale

Musical notation for the Concert A Scale, starting at measure 106. The scale is written in bass clef with a key signature of two sharps (F# and C#) and a common time signature (C). The notation includes a series of eighth notes with stems pointing up, and a series of eighth notes with stems pointing down, indicating a descending scale. The notes are: A2, B2, C#2, D2, E2, F#2, G2, A2, G2, F#2, E2, D2, C#2, B2, A2.

121 Concert D Scale

Musical notation for the Concert D Scale, starting at measure 121. The scale is written in bass clef with a key signature of two sharps (F# and C#) and a common time signature (C). The notation includes a series of eighth notes with stems pointing up, and a series of eighth notes with stems pointing down, indicating a descending scale. The notes are: D2, E2, F#2, G2, A2, B2, C#2, D2, C#2, B2, A2, G2, F#2, E2, D2.

136 Concert G Scale

Musical notation for the Concert G Scale, starting at measure 136. The scale is written in bass clef with a key signature of two sharps (F# and C#) and a common time signature (C). The notation includes a series of eighth notes with stems pointing up, and a series of eighth notes with stems pointing down, indicating a descending scale. The notes are: G2, A2, B2, C#2, D2, E2, F#2, G2, F#2, E2, D2, C#2, B2, A2, G2.

151 Concert C Scale

Musical notation for the Concert C Scale, starting at measure 151. The scale is written in bass clef with a key signature of one flat (F) and a common time signature (C). The notation includes a series of eighth notes with stems pointing up, and a series of eighth notes with stems pointing down, indicating a descending scale. The notes are: C2, D2, E2, F2, G2, A2, B2, C2, B2, A2, G2, F2, E2, D2, C2.

166 Concert F Scale

Musical notation for the Concert F Scale, starting at measure 166. The scale is written in bass clef with a key signature of one flat (F) and a common time signature (C). The notation includes a series of eighth notes with stems pointing up, and a series of eighth notes with stems pointing down, indicating a descending scale. The notes are: F2, G2, A2, B2, C2, D2, E2, F2, E2, D2, C2, B2, A2, G2, F2.