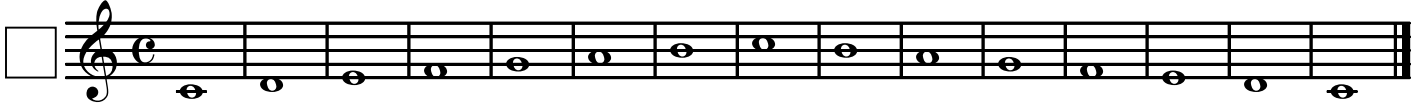


Trumpet in B \flat

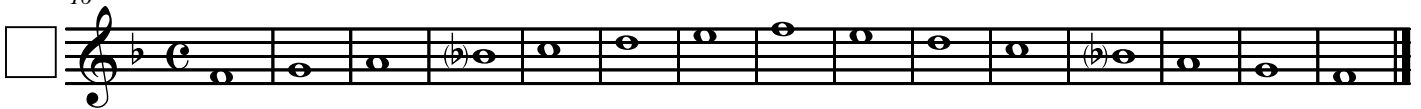
SMS Band Scales

Concert B \flat Scale



Concert E \flat Scale

16



Concert A \flat Scale

31



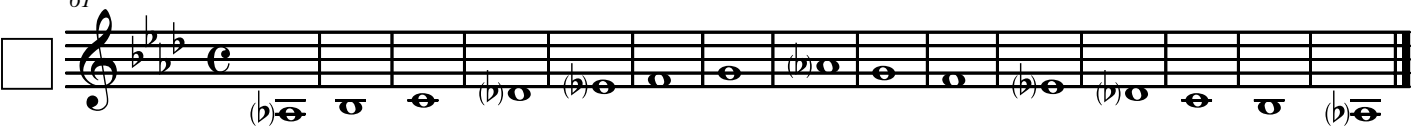
Concert D \flat Scale

46



Concert G \flat Scale

61



Concert B/C \flat Scale

76



Concert E/Fb Scale

91

Musical notation for the Concert E/Fb Scale, starting at measure 91. The scale is written in treble clef with a key signature of three sharps (F#, C#, G#) and a common time signature (C). The notation shows the ascending and descending scales with accidentals and ledger lines below the staff.

Concert A Scale

106

Musical notation for the Concert A Scale, starting at measure 106. The scale is written in treble clef with a key signature of three sharps (F#, C#, G#) and a common time signature (C). The notation shows the ascending and descending scales with accidentals and ledger lines below the staff.

Concert D Scale

121

Musical notation for the Concert D Scale, starting at measure 121. The scale is written in treble clef with a key signature of three sharps (F#, C#, G#) and a common time signature (C). The notation shows the ascending and descending scales with accidentals and ledger lines below the staff.

Concert G Scale

136

Musical notation for the Concert G Scale, starting at measure 136. The scale is written in treble clef with a key signature of three sharps (F#, C#, G#) and a common time signature (C). The notation shows the ascending and descending scales with accidentals and ledger lines below the staff.

Concert C Scale

151

Musical notation for the Concert C Scale, starting at measure 151. The scale is written in treble clef with a key signature of one sharp (F#) and a common time signature (C). The notation shows the ascending and descending scales with accidentals and ledger lines below the staff.

Concert F Scale

166

Musical notation for the Concert F Scale, starting at measure 166. The scale is written in treble clef with a key signature of one sharp (F#) and a common time signature (C). The notation shows the ascending and descending scales with accidentals and ledger lines below the staff.