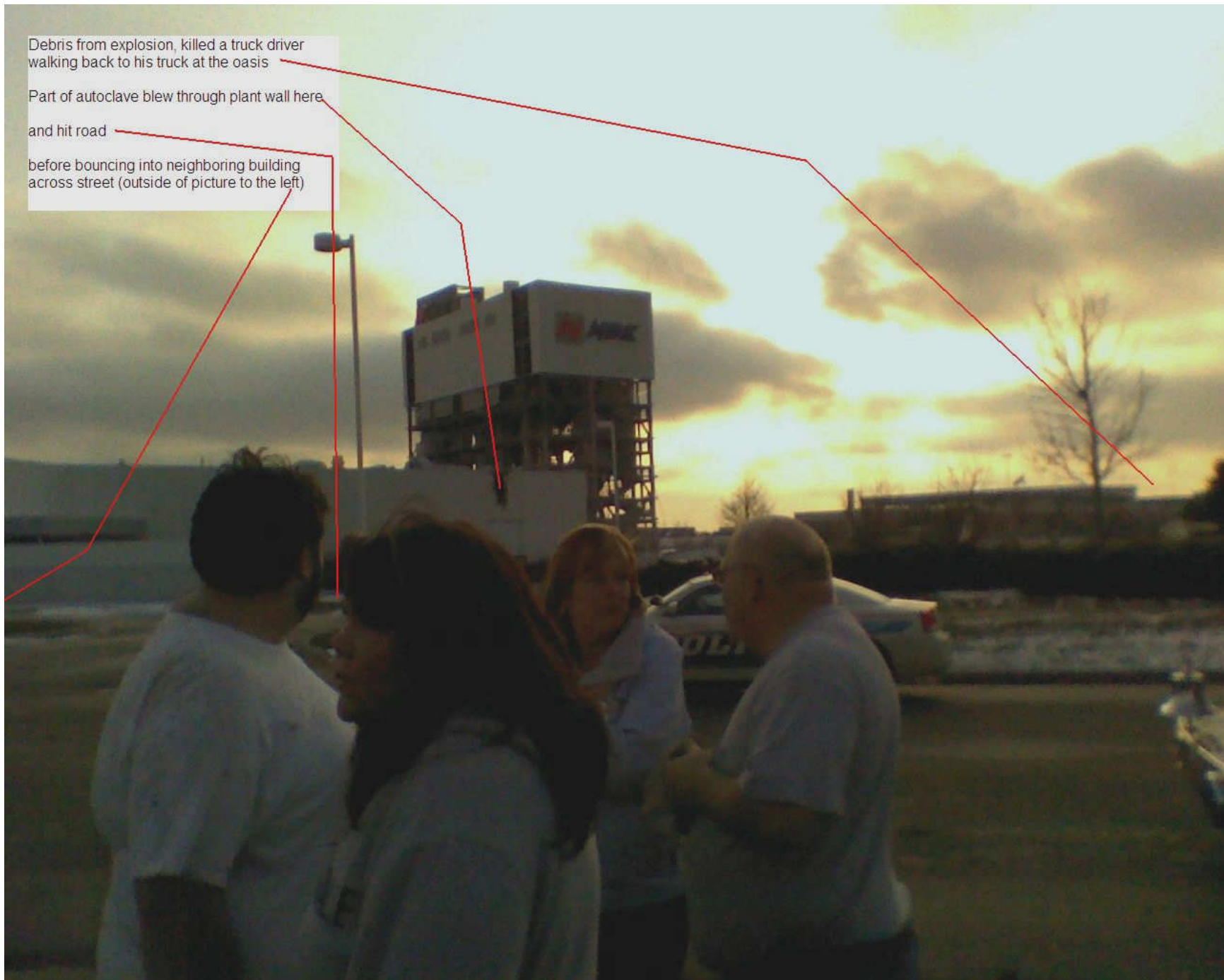




Front wall of west office area was blown out
Quartz factory offices
Design Center offices
Windows from John L office
Windows from John I office

South side of building Dec 7th after explosion



Debris from explosion, killed a truck driver walking back to his truck at the oasis

Part of autoclave blew through plant wall here and hit road

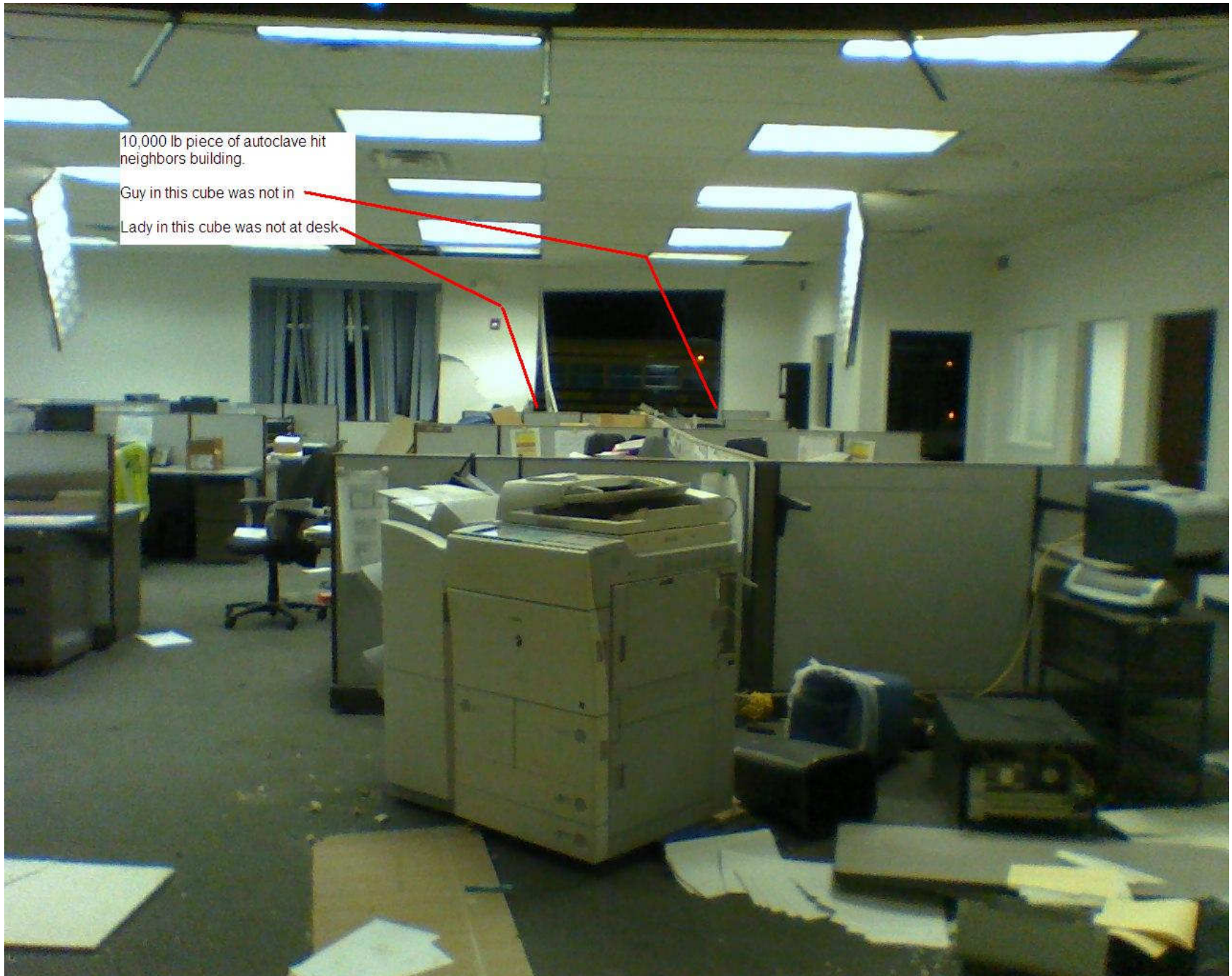
before bouncing into neighboring building across street (outside of picture to the left)

North side of building Dec 7th after explosion



10,000 lb piece of autoclave
bounced off road, hit building
across street
and landed here

Outside of building across street Dec 7th



10,000 lb piece of autoclave hit neighbors building.

Guy in this cube was not in

Lady in this cube was not at desk

Inside of building across street Dec 7th

Dec 10th Inside pictures



My office, some ceiling tiles down, notice cracks on wall, left side is 3" behind right side

Dec 10th Inside pictures



Receiving dock doors – blown out by explosion

Dec 10th Inside pictures



John L's office ceiling

Dec 10th Inside pictures



John L's office



View from Tollway Overpass 12-10



View from Oasis 12-12