

## Westonka Historical Society

### Our Goals

- Gather and display artifacts, documents and reproductions to preserve and classify early historical records of the western Lake Minnetonka Region.
- Provide access to information and educational opportunities to children and adults in the community with living programs of historical significance.
- Preserve and interpret materials and oral histories unique to the area.
- Provide a location for public accessibility to the collection for research, education and enjoyment purposes.
- Provide residents and students historical resources for Minnetrista, Mound, Spring Park, Navarre (Orono), and Minnetonka Beach.

Join us in completing these goals!

---

### Bring the fun and learning home!

When you visit our **Gift Shop**, you'll find wonderful gifts that extend the museum's learning experiences.

**JOIN** the Westonka Historical Society  
We are a 501(c)(3) organization, tax deductible.

Provide your name, address, phone number  
and email address to:

Westonka Historical Society  
Attn: Membership  
5341 Maywood Road  
Mound, MN 55364

Choose a type of Membership you are  
interested in:

Senior/Student.....\$15  
Individual..... \$20  
Family..... \$25  
Contributing..... \$50  
Business.....\$100  
Patron .....\$125

Make checks payable to:  
**Westonka Historical Society**

A complete Membership form  
can be found at our website:  
[www.WestonkaHistoricalSociety.org](http://www.WestonkaHistoricalSociety.org)

---

### WE NEED YOUR SUPPORT!

Your donations help support the  
Westonka Historical Museum's  
Programs and exhibitions.

## Westonka History Museum

5341 Maywood Road  
Mound, MN 55364

### Phone

(952) 472-9800

### Email

[Info@WestonkaHistoricalSociety.org](mailto:Info@WestonkaHistoricalSociety.org)

### Hours

Saturdays 10am to 2pm  
and by appointment

### Admission

\$3 donation per visitor requested.

### PreArranged Tours

\$5 donation per visitor requested.  
To arrange a group tour,  
please call (952) 472-9800

### Accessibility

The museum is fully accessible  
to visitors with disabilities.

### Parking

Parking is free.

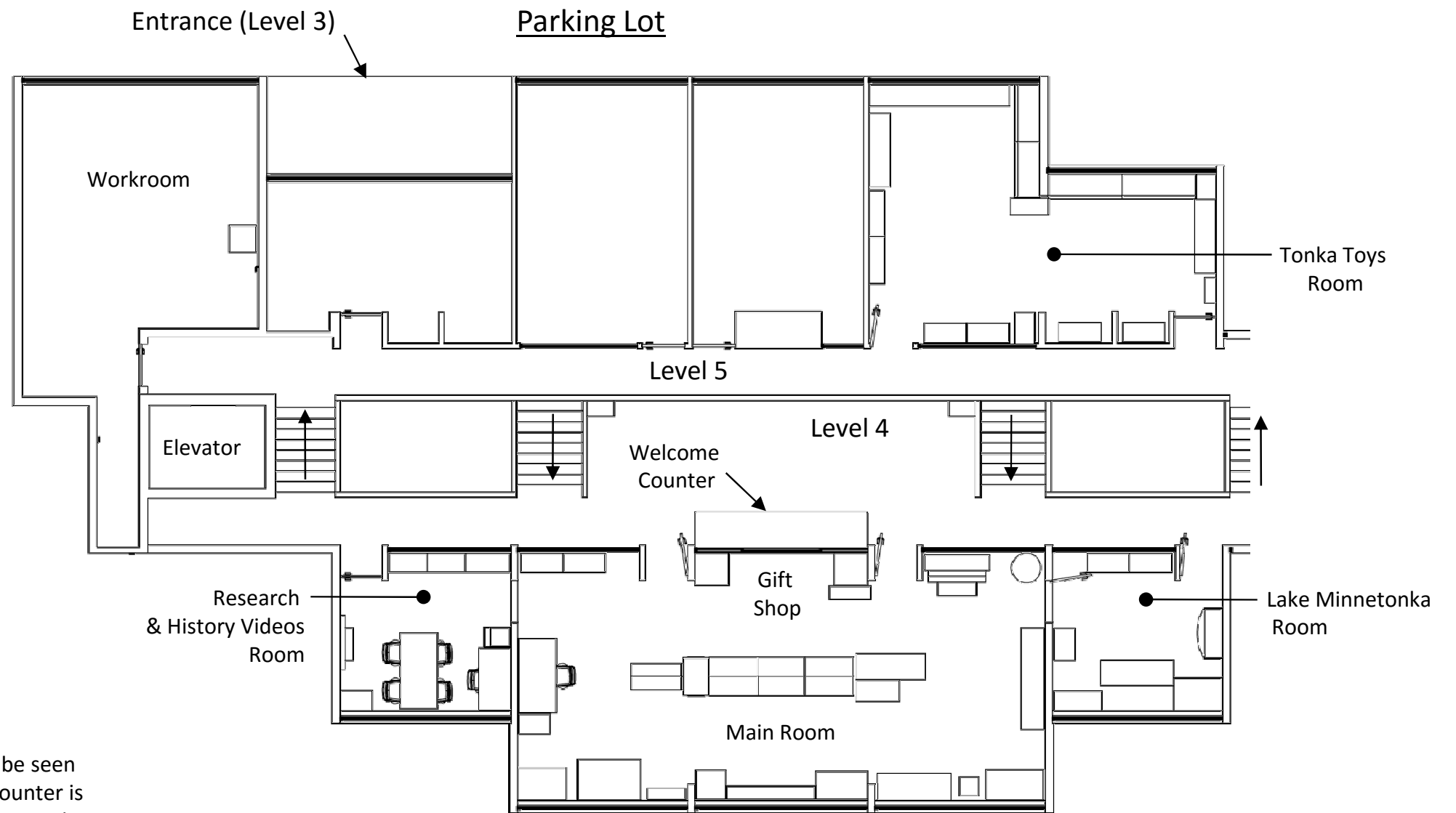


Westonka  
History  
Museum

MUSEUM  
GUIDE



## Exhibit Map



### Welcome to the Westonka History Museum!

#### Level 3

The entrance and exit to the building are on Level 3. Restrooms are marked, located to the right from entrance. You can access the museum (on Level 4) using the stairway on left or elevator on right.

#### Level 4

**Museum visitor sign-in** is on Welcome Counter in hallway. Display previews can be seen through the glass walls of the hall. If you brought artifacts along to donate, the counter is the place for us to receive them. Museum Main Room and Gift Shop access is next to the counter.

The **Research and History Videos Room** is located to the east (right), when entering exhibit area.

Glass-covered cabinets in the center of our **Main Room** contain these exhibits facing the counter: First People (pre-contact), Early Settlers & Families, and Local Collectors & Historians. On the reverse side of this cabinet island we include items from the five cities that are part of the Westonka area: Minnetrista, Mound, Spring Park, Navarre (Orono) and Minnetonka Beach. We also exhibit some of our local graduates, now popular, professional actors.

**High school yearbooks** and other local school items are in the east side of the Main Room, as well as recognition of our State Senator Gen Olson's important legislative work in bleacher safety and the tragedy connected to it.

Along the outside window wall are exhibits of rotating topics, including local authors and local cookbooks. An early State Governor's desk from his Mound home is there with information to read about him. Looking out this window, you can see the former Tonka Toys building.

Continuing along the window, heading west, are local restaurant exhibits, fire department artifacts, and the depot desk from the railroad track that once centered the Village of Mound. A very early map is on the wall next to the desk.

**The Andrews Sisters** careers, awards, scrapbooks, handwritten notes, a dress, and their piano are in the west end of the Main Room.

The **Lake Minnetonka Room** is located to the west of the Main Room. It highlights our new model of Native American Burial Mounds, some of which still exist. This room also has a 1928 map of a local public cemetery with names on the plots. Advertising hand-outs, early clothing, famous early hotel photos, a Hotel Del Otero desk, wooden Rid-Jid ironing boards, and locally manufactured water skis are also here.

#### Level 5

The **Tonka Toys Room** contains product collections and company information. It is up another ½ flight of stairs just outside the Lake Minnetonka Room. Level 5 can be also accessed using the elevator at the other end of the building. The Tonka Toys Room entrance is identified with a sign overhead.

A staff-only Workroom is also located on Level 5.