

elementsTMfree

OBTURATION SYSTEM

n., Powered obturation with
no strings attached.
(In other words...it's cord-free!)



Dentistry *unleashed.*



Ready to go when you're ready to go...

- Downpack unit heats to 200°C in less than 0.5 seconds and with an adjustable heating range of 100°-400°C
- 360° activation ring to improve your experience and clinical outcome
- Digital temperature control for procedural accuracy
- Perfect for Continuous WaveTM and single motion downpack obturation



elementsTMfree

- Activation button
- Ring Switch
- Battery Level Indicator
- Mode Selection
- Mode Button
- Reverse Button
- Power Button
- Charging Indicator
- Jumpstart Button

elementsTMfree is a cord-free innovation with breakthrough technology based on the popular Elements Obturation Unit (EOU)



SybronEndo

elementsTMfree

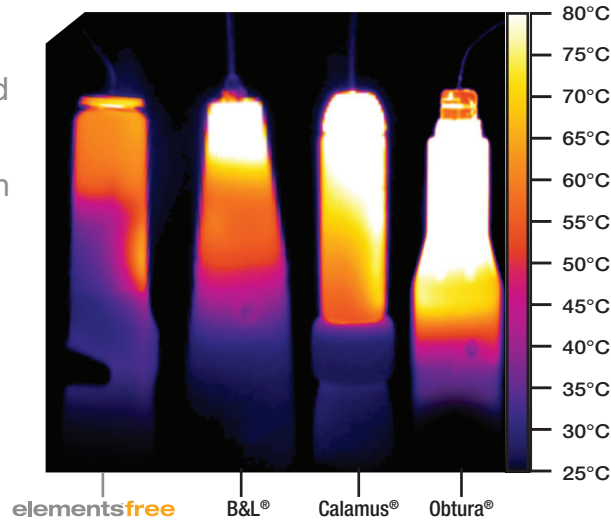
Dentistry *unleashed.*

≈ Breakthrough



Powered obturation, no strings attached...

- Swiss motor and gear drive for exceptional performance
- Motorized extrusion for less hand fatigue
- Single-use cartridges with built-in finger grips for ease of use
- Aerogel insulation surrounds the heating element for your comfort and your patient's safety



Protect your Patients...

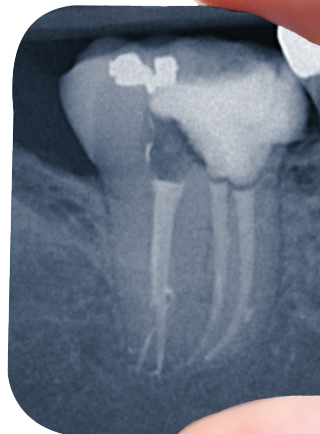
Thermal images of three backfill devices, after being heated to 200°C for 5 minutes.

Data on file at SybronEndo

≈ Epic

For endo-worthy bragging rights...

- Sharing results your patients and...
- Posting on **facebook™** for your colleagues to admire...



Ready to give elements™ free a try? Go to...

elementsfreeendo.com

elementsTMfree

n., Powered obturation with
no strings attached



Dual Charging Base



Single Charging Base

PART #	UNITS
973-0500-TypeB	Elements Free System Type B with Dual Charging Base
973-0502-TypeB	Elements Free Downpack Type B with Single Charging Base
973-0504-TypeB	Elements Free Backfill Type B with Single Charging Base

PART #	REPLACEMENT PARTS
973-0516-TypeB	Elements Free Cord Type B
973-0515	Elements Free Transformer
973-0337	Elements Cartridge Bender Tool

PART #	ACCESSORIES
973-0510	Elements Free, Dual Charging Base
973-0512	Elements Free, Single Charging Base
972-1002	Elements Gutta Percha Cartridge 23GA
972-1003	Elements Gutta Percha Cartridge 25GA - Pack 10
972-1005	Elements Gutta Percha Cartridge Heavy 23GA - Pack 10
952-0003	Buchanan Heat Pluggers (XF, F, FM, M, ML)
952-0004	Buchanan Heat Plugger Fine .06 Taper
952-0005	Buchanan Heat Plugger Fine Medium .08 Taper
952-0006	Buchanan Heat Plugger Medium .10 Taper
952-0007	Buchanan Heat Plugger Medium-Large .12 Taper
952-0031	Buchanan Heat Plugger Extra Fine .04 Taper
952-0017	System B Tip Stand
974-0058	Buchanan Hand Plugger 1
974-0059	Buchanan Hand Plugger 2
974-0060	Buchanan Hand Plugger 0

Dentistry *unleashed.*

Axis|SybronEndo

Axis|SybronEndo 1717 West Collins Ave, Orange, CA 92867 Tel 800.346.3636 Tel 714.516.7979 Fax 714.516.7936 axisdental.com | sybronendo.com