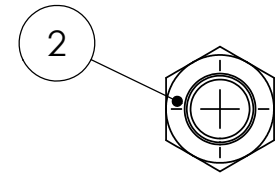
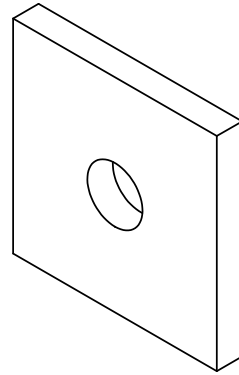
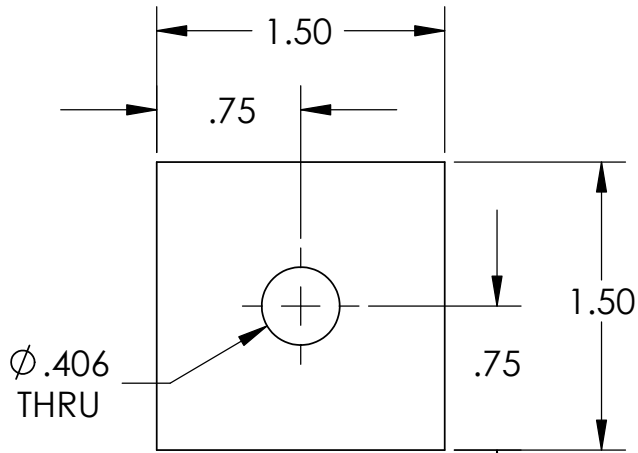
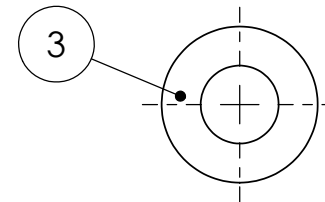


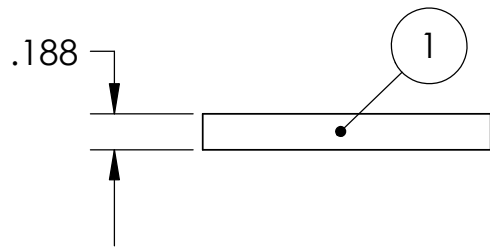
REVISIONS		
REV.	DESCRIPTION	DATE
A	INITIAL RELEASE	



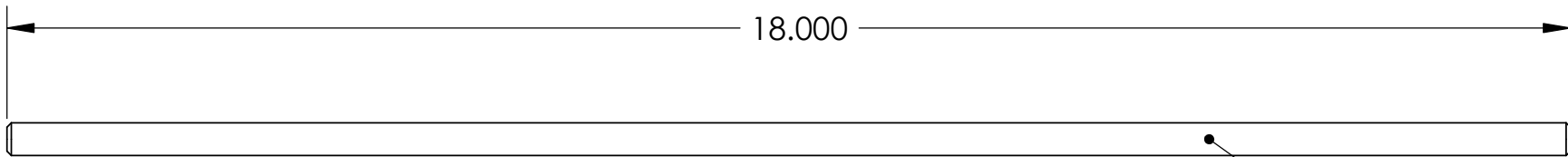
3/8 - 16 NUT
2 REQUIRED
SCALE - 1:1



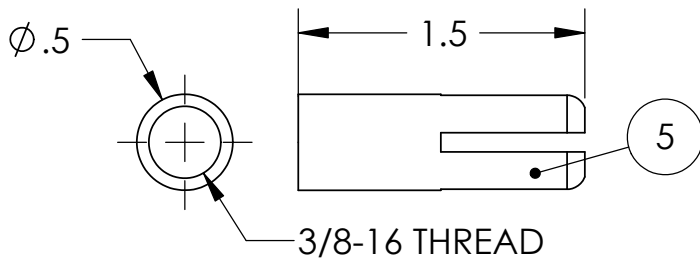
3/8" WASHER
2 REQUIRED
SCALE - 1:1



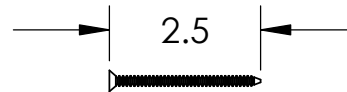
CRUSH PLATE
MAKE FROM .1875 THICK 6061-T6 AL
2 REQUIRED
SCALE - 1:1



3/8-16 THREADED ROD
2 REQUIRED (MCMASTER P/N 98837A031 CUT IN HALF)
SCALE - 1:2



3/8-16 DROP-IN ANCHOR
2 REQUIRED (MCMASTER P/N 97082A031)
SCALE - 1:1



2 1/2" WOOD SCREW #6
40 REQUIRED
SCALE - 1:1

WEBER Technical		
TITLE: HARDWARE - SKIN PRESS		
SIZE A	DWG. NO. SSP-002	REV A
SCALE: 1:10	DATE: 09/07/05	SHEET 2 OF 4